

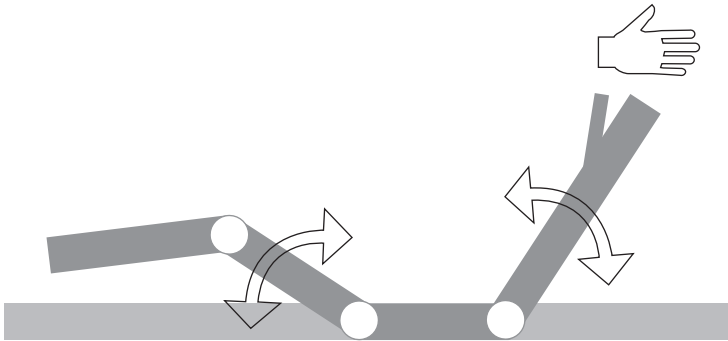
Motor frames



Lattoflex Flat motor

Lattoflex 282-FM/382-FM/982-FM

2-Motors



Installation and operating instructions

Important document. Please keep in a safe place.

Here you can find more information, details and videos about your product. Digital operating instructions:



www.lattoflex.com/service/x82fm

lattoflex®

Installation and operation

1 Placing in a bed

Insert your motor frame into the existing bed frame. We recommend side support slats with a width of at least 2.5 cm (centre frame min. 5 cm). The motor frame does not require any installation space at the bottom, but must always fit into the bed without tension.

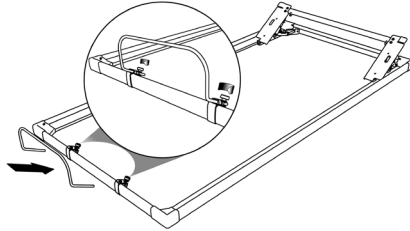
Please always heed the spacing of the back part with its motorised adjustment, to the head part of the bed. There should be spacing of at least 1.5 cm here when the bed is laid flat.

Anti-slip film

Attach to the support points of the frame in the bedstead. The foils prevent noises that can be caused by slipping of the frames in the bedstead..

2 Mattress holder

Attach the supplied holder at the foot end. The plastic clare premounted.



3 Commissioning with cable remote control

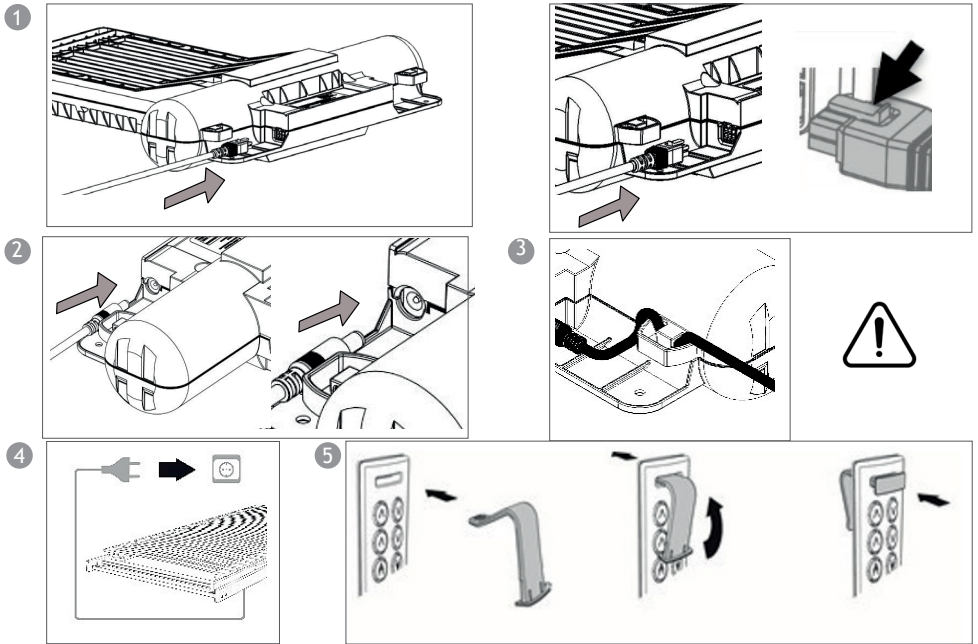
Please proceed as follows to commission your motor frame:

- a Transport protection: Remove velcro straps.
- b Fold up the foot section of the frame, access the connection accessories in 2 boxes to the left and right of the motor.
- c Unpack the cable remote control and the power supply unit.
- d Connect the plug of the cable remote control to the plug socket on the left side of the motor ①.
Guide the cable through the strain relief ③.



Failure to use the strain relief can result in damage to the cable remote control or power supply unit!

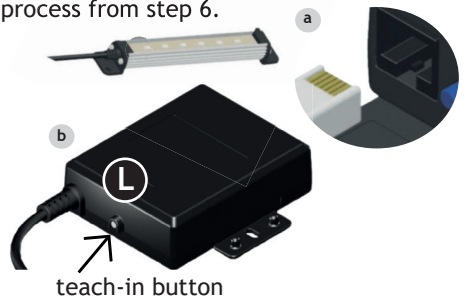
- e Connect the power supply unit to the motor on the right-hand side ② and guide the cable through the strain relief ③.
- f Connect the power supply unit to the power source ④.
- g Mount the hook on the cable remote control, this is pushed through a through hole in the upper area of the switch with light pressure ⑤.
- h Adjust motor frame by cable remote control.



4 Commissioning with radio remote control

- a Transport protection: Remove the velcro fastenings.
- b Fold up the foot section of the frame to access the black fabric bag and a cardboard box.
- c Connect the plug of the radio receiver to the socket on the left-hand side of the motor **1**. Route the cable through the strain relief **3**.
- d Connect the under-bed lighting to the socket on the radio receiver **a**.
- e Connect the power supply unit to the motor on the right-hand side **2** and guide the cable through the strain relief **3**.
- f Connect the power supply to the power source **4**.
- g Unpack the remote control and insert the batteries. The backlight flashes.
- h Press any button, the status LED and the backlight will now flash alternately. This status indicates that the teach-in process has started and the remote control is searching for a suitable motor frame.
- i Press the teach-in button **L** on the radio receiver **b** within 30 seconds. To confirm that the process has been successful, the head drive will move briefly.
- j The status LED goes out, the backlight lights up constantly. The teach-in process is now complete and the remote control has been taught to this motor frame.

If the pairing process was unsuccessful and no controller was found, repeat the process from step 6.



5 Adjust the settings

Buttons 1-6: Controls the drives (up/down for all, back and legs). Movement continues as long as the button is pressed.

Button 7: Switch the LED module on/off (press briefly).

Button 8: Dimming the LED module (press and hold).

Button 9: Turn on the LED torch (press and hold for approx. 3 seconds; it will stay on for approx. 20 seconds). To switch it off early, briefly press button 9.

If the remote control is lost or faulty, press and hold the button next to the LED socket on the radio receiver.



Emergency lowering button



6 Reset to factory settings

1. Press buttons 1,3,5 at the same time; the status LED will flash.
2. If the status LED is lit continuously, release the buttons.

3. The radio remote control has been reset. The backlight is flashing; please pair it again now.

7 Safety instructions

Do not step on the frame when operating and in the raised position. The frame is designed in such a way that there is normally no risk of pinching or crushing when it is operated. Nevertheless, make sure that no persons, especially children, are under the frame or reach into the mechanism when the frame is operated. Lattoflex 282-FM/382-FM/982-FM are insert frames for bedsteads. The use is only intended according to the specifica-

tions of these instructions and only for domestic use.

Never pinch the cables or bowden cables, lay them with sharp edges or squeeze them through moving frame parts. Only replace damaged connection lines with original parts. Risk of damage by shortening the support spars or by dismantling fittings.

Thomas GmbH+Co. Sitz- und Liegemoebel KG · Walkmuehlenstr. 93 · D-27432 Bremervoerde
Phone + 49 (0) 4761/979-0 · Fax + 49 (0) 4761/979-161 · E-Mail: info@lattoflex.com

www.lattoflex.com